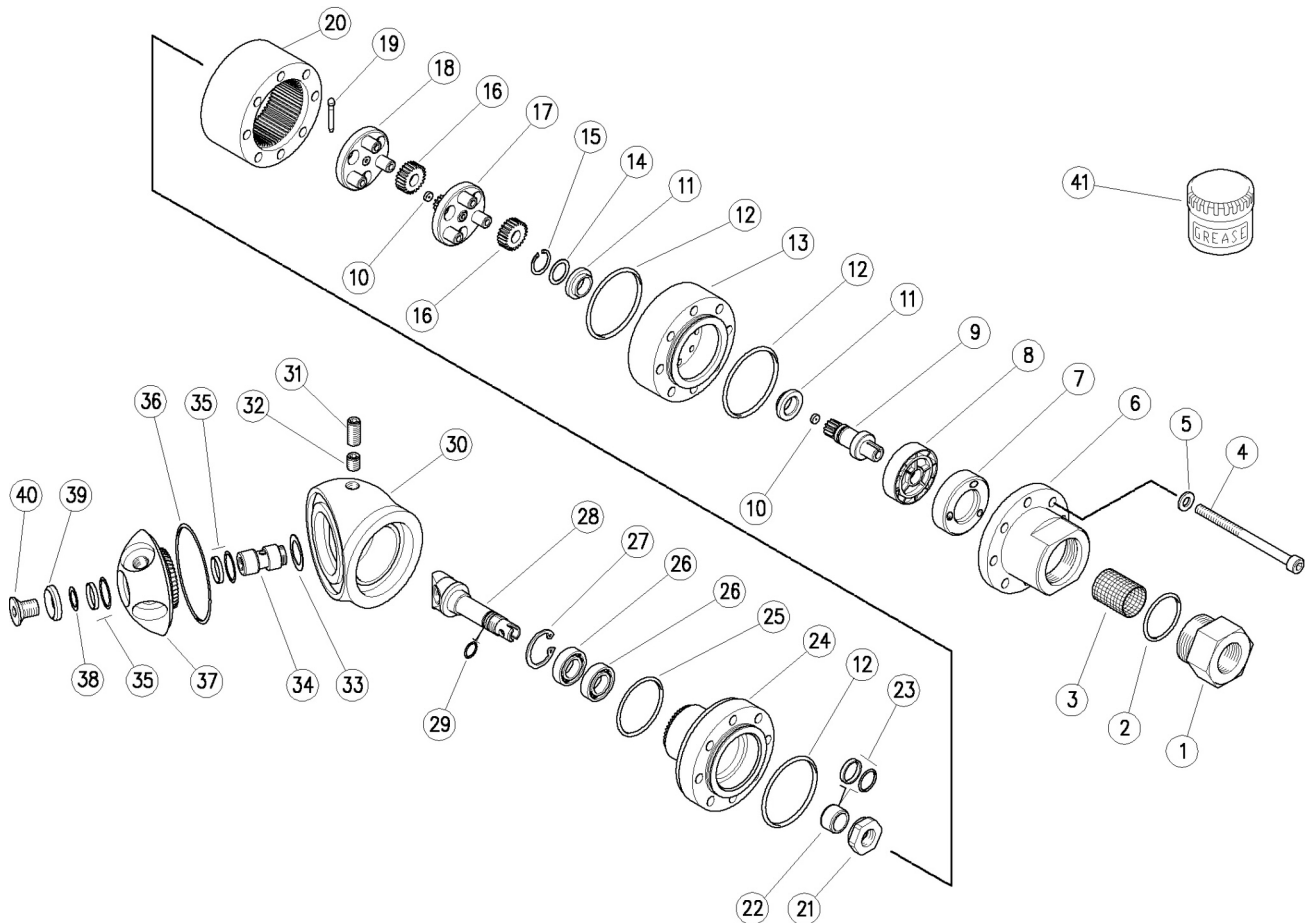


25.5200.20 A42-R2 Tank clean.,2-stage, 20 l/min  
 25.5200.24 A42-R2 Tank clean.,s/prop., 25 l/min  
 25.5200.28 A42-R2 Tank clean.,s/prop., 30 l/min

25.5200.33 A42-R2 Tank clean.,s/prop., 50 l/min  
 25.5200.34 A42-R2 Tank clean.,s/prop., 40 l/min



Pos.	P/N	Description	Q.ty K1K2K3K4			
1	80.0534.51	Inlet coupl., 1/2Bsp F Sst.	1			3
2	10.3077.10	O-ring, 1,78x28,3 mm Vi 70	1	•		10
3	28.0116.53	Strainer, D.21,5 L.26,5 mm 38mesh-700µm Sst.	1			5
4	16.1908.00	Screw, DIN912 M6x80 mm Sst.	8			10
5	14.3569.05	Washer, 6,4x11x1 mm Sst.	8			10
6	80.0533.51	Inlet housing, Sst.	1			1
7	80.0514.51	Ring injector, 3x2 mm Sst. (1)	1			1
7	80.0519.51	Ring injector, 3x2,4 mm Sst. (2)	1			1
7	80.0515.51	Ring injector, 3x2,6 mm Sst. (3)	1			1
7	80.0525.51	Ring injector, 5x3,3 mm Sst. (4)	1			1
7	80.0526.51	Ring injector, 4x3,2 mm Sst. (5)	1			1
8	80.0512.84	Turbine, plast.	1			3
9	80.0540.22	Planetary shaft, complete	1			1
10	80.0536.38	Shim ring, 1,2x6x2mm brz **	2	•		3
11	80.0548.84	BUSHING RING	2	•		3
12	10.3034.10	O-ring, 1,5x46 mm Vi 70	3	•		10
13	80.0532.41	Inlet flange, Al	1			1
14	80.0510.53	Shim ring, 12,3x17x0,5mm Sst.	1			5
15	10.0999.05	Snap ring, E 12 Sst.	1	•		10
16	80.0501.38	Planetary gear, z.24 brz	6	•		3
17	80.0541.22	Plan. gear holder+3 pins+gear, Z.12 Sst.	1			1
18	80.0538.22	Planetary gear holder+3 pins, Sst.	1			1
19	80.0545.31	Fuse plug, D.3mm	1	•		5

\*\* On request

Kit	P/N	Description	Q.ty
K1	25.5181.24	Seals Spares Kit - A42R 7x1pcs.	1
K2	25.5182.24	Spares Kit - A42/43/44 7x1pcs.	1

(1) 25.5200.20 (2) 25.5200.24 (3) 25.5200.28 (4) 25.5200.33 (5) 25.5200.34

Pos.	P/N	Description	Q.ty K1K2K3K4			
20	80.0524.51	Ring gear z.60, 2-stage cleaner, sst.	1			1
21	80.0504.51	Ring nut, M12x1 Sst.	1			1
22	80.0509.51	Seal holding bushing, Sst.	1			3
23	10.2035.16	Stem seal, 16x21x2,1 mm +O-ring Vit.	1	•		5
24	80.0520.51	Pinion, z.45 Sst.	1			1
25	10.3256.10	O-ring, 3,53x36,09 mm Vi 70	1	•		10
26	11.4412.28	Ball-bearing, 12x28x8 mm - 2RS1 Sst.	2	•		3
27	10.1011.05	Snap ring, I 28 Sst.	1	•		10
28	80.0506.51	Propeller shaft, Sst.	1			1
29	10.3019.10	O-ring, 1,5x9,5 mm Vi 70	1	•		10
30	80.0523.41	Spherical cap -A42R/R2, Al.	1			1
31	16.2225.00	Set screw, DIN913 M8x16 mm Sst.	1			10
32	16.2221.00	Set screw, DIN914 M8x8 mm Sst.	1			10
33	80.0513.53	Shim ring, 15,4x23x0,3mm Sst.	1			5
34	80.0507.51	Pin, M12x1M-M8F Sst.	1			3
35	10.2035.00	Stem seal, 15x20x2 mm +O-ring	2	•		4
36	10.3270.10	O-ring, 3,53x59,92 mm Vi 70	1	•		10
37	80.0539.22	Spher.nzl hold,3x1/8Npt Al+gear z.47,Sst	1			1
38	80.0505.53	Shim ring, 8,3x14x0,3mm Sst.	1			5
39	80.0015.51	C/sunk washer, 8,5x22x4,5mm Sst.	1			3
40	16.1954.12	Screw, DIN7991 M8x12 mm Sst.	1			10
41	14.6550.00	Teflon grease x30g. **	1			2